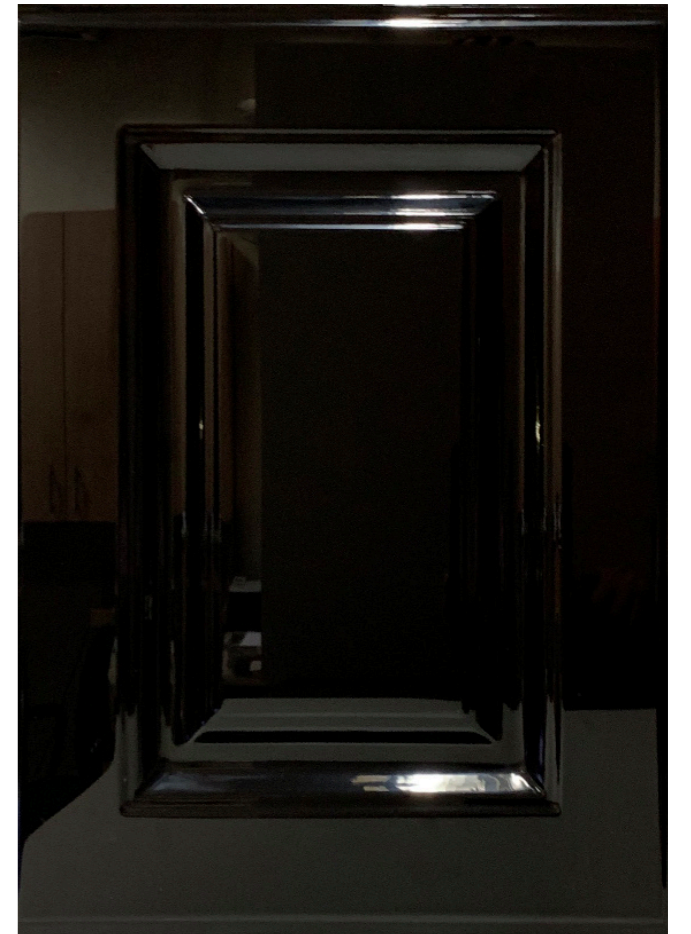




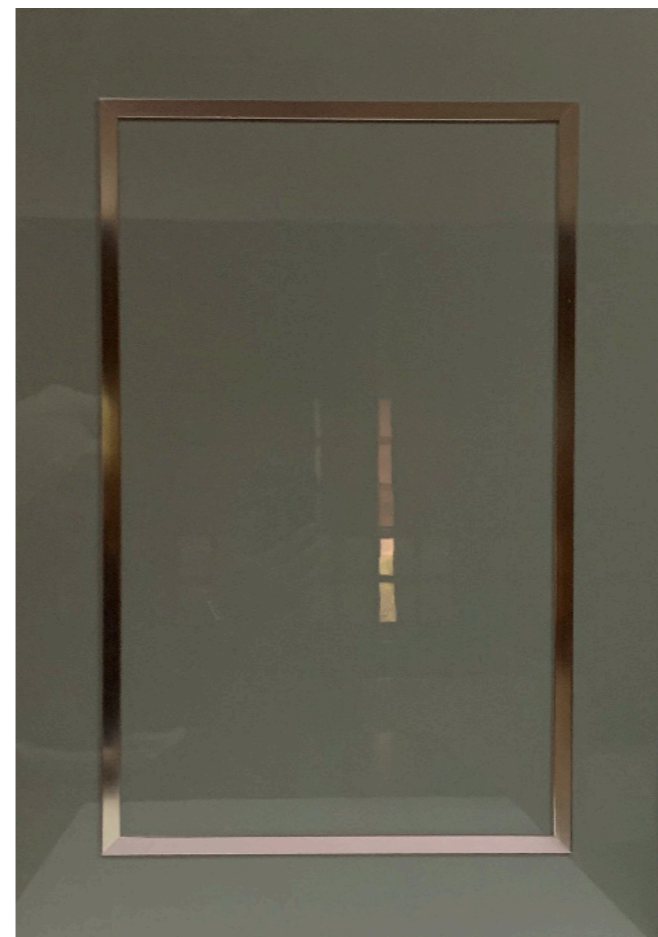
Special  
Shutters



Sierra mist - white



Sierra mist - black



1003 - T Profile, RAL 7023 HG



1003 - T Profile, RAL 5009 HG



VW42 American walnut, veneer single tone



VW42 White oak, veneer open pore grey



VW42 Color N838, Matt On MDF



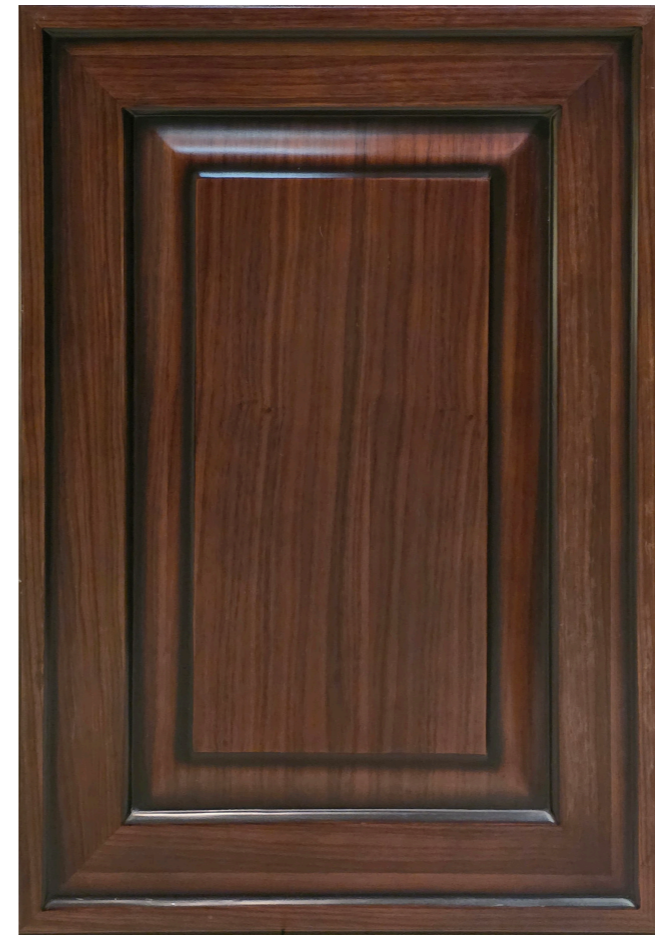
36FP Color RAL 7023 Matt



VW42 Color Mouse Matt



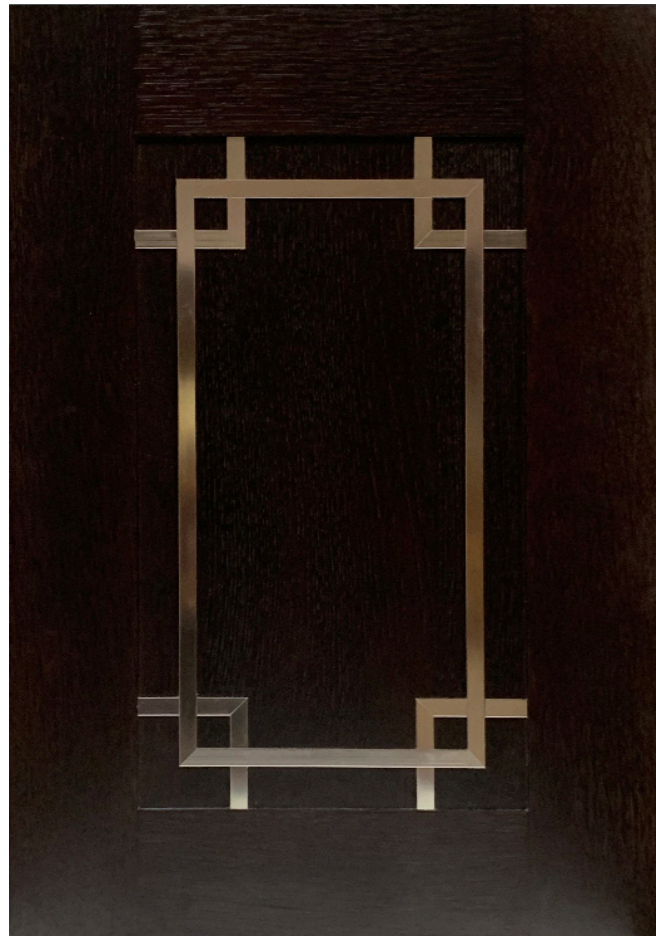
VW42 Color Mouse Open Pore



VW42 American walnut, veneer 2-tone



VW42 Ebony veneer



22FP T Profile, White Oak, Color Wenge Open Pore



22RP-1 Distressed Finish Teak, Color Black Matt



35IBH MGP, Color Grey Open Pore



35IBH Without Handle, RAL1013 Open Pore



22RP-1 Distressed Finish Teak, Color RAL 4009 Matt



22RP-1 Distressed Finish Teak, Color RAL 6001 Matt



22FP-CP Carved Panel with Gold Leaf Finish



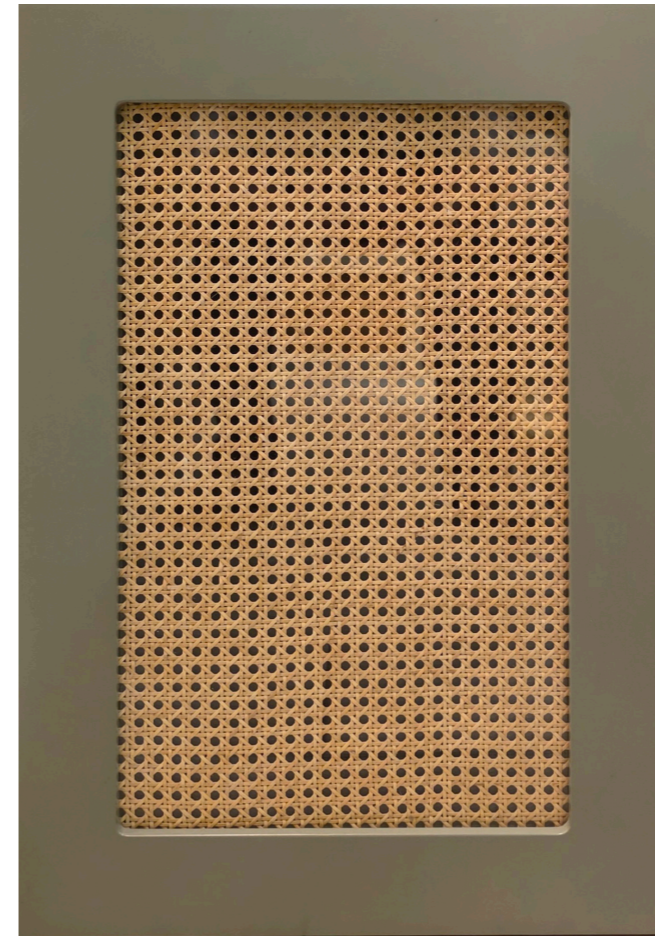
32RP White Ash, Ivory Patina



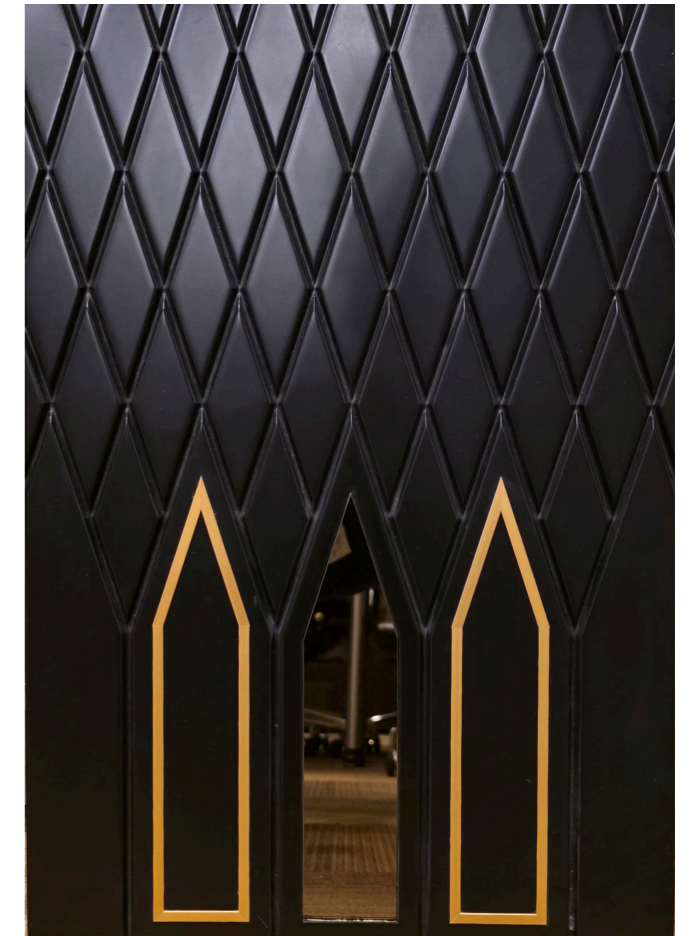
36FP Distressed Finish Wood, White Oak Color White



36MGP Color RAL 7023, Open Pore



Cane GP NCS S 5010, 50Y



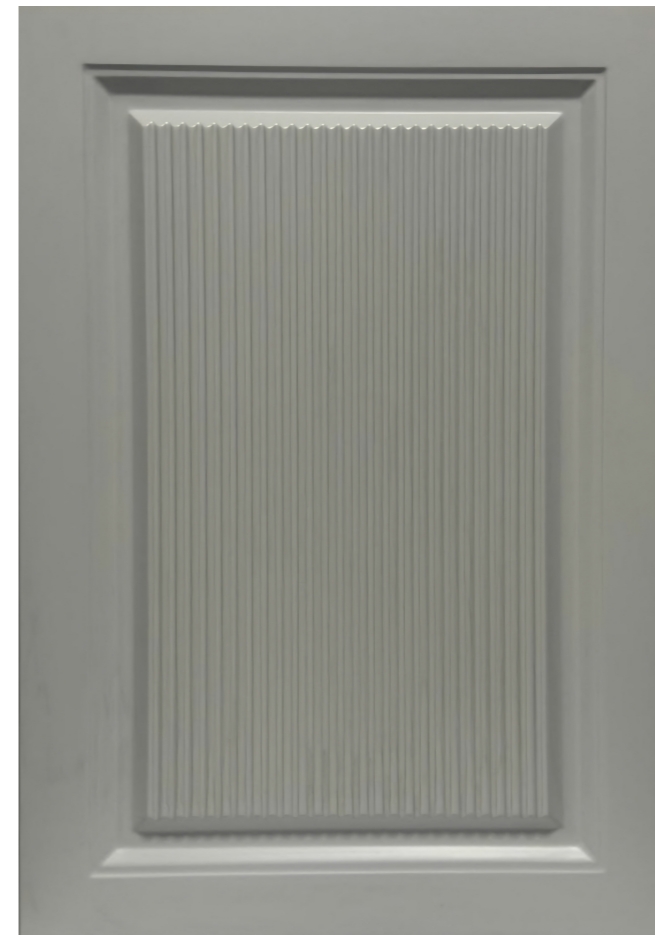
SD-01 RAL 9005 Matt



SD-04 MGP White Lac, Matt



SD-05 MGP RAL 1035, Matt



SD-03, RAL 9002 Matt



SD-06, NCS S 4020 B70G, Matt



Flute with Edge profile, Brushed Golden Edges



51-FP, Gold T Profile, Oak Veneer



Regent 6, Teak Veneer



51-FP, Gold T Profile, White Ash Veneer



Arco - Opaque Cane

- FP — Flat Panel
- RP — Raised Panel
- GP — Glass Panel (Without Glass)
- MGP — Mesh Glass Panel (Without Glass)
- L — Louvered Panel
- CL — Combination Louver Panel i.e. Solid Panel+Louvers
- J — Jali
- ES — Edge Step

**Series**

- 10 Series i.e. 11, 12, 13, 14, 15 — In this series, the width of the style is 70mm
- 20 Series i.e. 21, 22, 23, 24 — In this series, the width of the style is 90mm
- 30 Series i.e. 31, 32, 33, 34 — In this series, shutters are with Mitered Joints
- 50 Series i.e. 51 — In this series, shutters have a frame of at least 25mm

**Profiles**

- Profile 1 i.e. FP-1, RP-1, etc — in this profile, the Joints are plain (without any groove)
- Profile 2 i.e. FP-2, RP-2, etc — in this profile, the Joints are grooved

**Notes-**

- Shades may vary from that of actual products
- Designs & colours can be customized as per requirements
- More designs available at the Display Centre



[sales@aamodulars.in](mailto:sales@aamodulars.in)

[www.aamodulars.in](http://www.aamodulars.in)

**Corporate Office**

B-38, Industrial Area, Phase III,

Mohali, Punjab - 160055, India

Phone: +91 172 2272873

**Works**

Plot No.149-150, Vill. Sainsiwala,  
Brotiwala, Tehsil Baddi, Distt. Solan

HP - 174103

Phone: +91 179 2255139